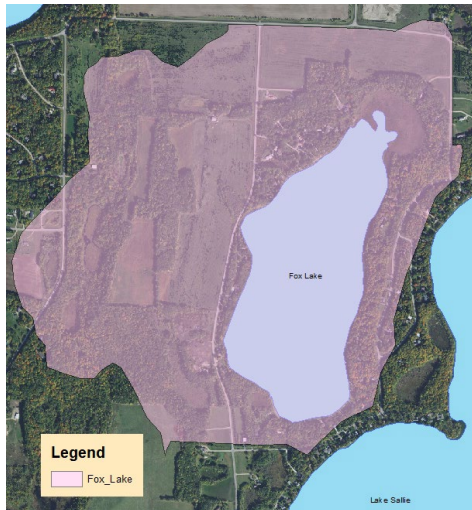


**Overall Strategy:**  
Maintain Water Quality

**Impairment:** Not listed as impaired

**Shoreland Classification:**  
Recreational Development

**Subwatershed Lake Cover/Use:**  
21.8% Open Water  
7.4% Developed  
3.0% Wetlands  
9.3% Cultivated Crops  
48.4% Forest  
10.1% Grasslands



Water Quality	10-Year Average (2008-2017)	Trend
Secchi	14 ft.	Increasing
Total Phosphorus	12 µg/L	Stable
Ortho Phosphate	3 µg/L	Stable
Chlorophyll-a	4 µg/L	Stable

**Short Term Goals - Year 2025**

- Maintain a 5-year mean summer phosphorus concentration at or below 13 µg/L
- Maintain mean summer Secchi depth no less than 14 ft

**Long Range Goals – Year 2030**

- Achieve a 5-year mean summer phosphorus concentration at or below 13 µg/L
- Maintain mean summer Secchi depth no less than 14 ft

**Basic Facts**

<b>DNR ID/ Becker No</b>	MN03-0358-00 / 358
<b>Township(s)</b>	Lake View (Sec 1, 18)
<b>Lake Classification</b>	Recreational Development
<b>Lake Area</b>	143 acres
<b>Littoral Area</b>	86 acres (63.7%)
<b>Sub-watershed Area</b>	619 acres
<b>Inlet(s)</b>	None
<b>Outlet(s)</b>	Wetland Stream to Lake Sallie
<b>Control Structures</b>	None
<b>Highest Recorded*</b>	1334.17 feet (7/7/1998)
<b>Lowest Recorded*</b>	1333.26 feet (7/30/2003)
<b>Ordinary High Water Level*</b>	1334 feet
<b>Recorded Range*</b>	0.91 feet
<b>Maximum Depth</b>	24 feet
<b>Main Fish Species</b>	Black crappie, Bluegill, Largemouth bass, Northern pike, Pumpkinseed, Rock bass, Walleye
<b>Secondary Fish Species</b>	Black/Brown/Yellow bullhead, Hybrid sunfish, White sucker, Yellow perch
<b>MN DNR/ Private Fish Stocking</b>	Walleye
<b>Aquatic Invasive Species (2015)</b>	None listed
<b>Public Access Sites</b>	None
<b>Marinas</b>	None
<b>Public Beach</b>	None
<b>References</b>	DNR Lake Finder, Becker County

\*Elevations NGVD 29

\*\* Elevations NAVD 88

**Overall Assessment**

Fox lake is a small, heavily-developed lake totaling 143 acres and reaching a depth of 24 feet. Approximately 60% (86 acres) of the lake is considered littoral and is less than 15 feet. There are no surface water inlets and the lake receives water primarily for stormwater runoff and groundwater interactions. There is one outlet to the lake on the south which flows south through a wetland to Lake Sallie.

The majority of residential lake development occurred between the 1960s and 1990 where the number of homes more than doubled from 24 to 55. Land cover in the drainage area is predominantly forested land which accounts for 62% (300 acres) of the land area. Other land types include 62 acres of grassland (13%), 57 acres of cropland (12%), 46 acres of developed area (10%), and 19 acres of wetlands (4%). The MN DNR owns a 3-acre tract of land that contains approximately 1300 feet of shoreline on the north side of the lake that remains protected.

Prior to 2004, a 40-acre parcel just north of the lake was used for agricultural purposes with turkey manure being applied to the land at times. The lake showed signs of degradation with nuisance algal bloom and poor water clarity. The turkey farm ceased its operation in 2004 and along with that, the application of manure to the property. The lake responded favorably with drastic and immediate increases in water clarity and reductions of in-lake phosphorus levels. Currently, water quality is good with an increasing trend in clarity with a 14-foot average over the last ten years and a stable phosphorus concentration of 12ppb over the same period.

**Implementation**

**Planned/Potential Projects:**

**Capital Improvement Projects:**

**Projects & Programs**

**Ongoing Programs:**  
Programs

**Past Studies**