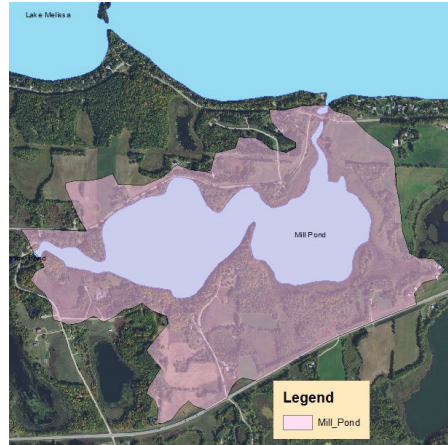


Overall Strategy:
Maintain Water Quality

Impairment: Not listed as impaired

Subwatershed Lake Cover/Use:
29.4% Open Water
15.4% Developed
2.0% Wetlands
14.6% Cultivated Crops
23.0% Forest
27.9% Grassland



Water Quality	10-Year Average June - Sept (2007-2016)	Trend
Secchi (clarity)	7.5 ft.	Insufficient Data
Total Phosphorus	20 µg/L	Insufficient Data
Ortho Phosphate	N/A	Insufficient Data
Chlorophyll-a	10 µg/L	Insufficient Data

Short Term Goals - Year 2025

- Achieve a 5-year mean summer phosphorus concentration at or below 20 µg/L ± 4%
- Maintain mean summer Secchi depth no less than 5 ft

Long Range Goals – Year 2035

- Achieve a 5-year mean summer phosphorus concentration at or below 20 µg/L ± 4%
- Maintain mean summer Secchi depth no less than 5 ft

Basic Facts

DNR ID/ Becker No	MN03-0377-00 / 377
Township(s)	Lake View (Sec 31, 32)
Lake Classification	Natural Environment
Lake Area	185.6 acres
Littoral Area	185.6 acres (100%)
Sub-watershed Area	481 acres
Inlet(s)	Pelican River from Lake Melissa, Wetland Stream from East
Outlet(s)	Pelican River to Buck Lake
Control Structures	Dam (Buck's Mill)
Highest Recorded*	1328.73 feet (5/27/1997)
Lowest Recorded*	1327.93 feet (4/19/2012)
Ordinary High Water Level*	1328.7 feet
Recorded Range*	0.8 feet
Maximum Depth	10 feet
Main Fish Species	Black Crappie, Bluegill, Green sunfish, Largemouth bass, Northern pike, Pumpkinseed, Walleye
Secondary Fish Species	Black/Brown/Yellow bullhead, Bowfin, Hybrid sunfish, White sucker, Yellow perch
MN DNR/ Private Fish Stocking	N/A
Aquatic Invasive Species (2015)	Flowering rush, Zebra mussel
Public Access Sites	Pelican River from Melissa (DNR)
Marinas	None
Public Beach	None
References	DNR Lake Finder, Becker County

*Elevations NGVD 29

** Elevations NAVD 88

Overall Assessment

Mill Pond is a shallow natural environment lake totaling 185 acres in size. Technically, Mill is a reservoir because of a downstream dam (Buck Mill Dam) which maintains the water level about 6 feet above the natural lake elevation. The east half of the lake is dense vegetation except for the channel which the Pelican River flows through. The west basin contains open water and reaches a maximum depth of 10 feet.

Mill has not designated boat ramp, but the lake can be accessed via Lake Melissa with canoes, kayaks, or small watercraft. There is some residential development in the form of single family homes, primarily with the west basin.

Historically, a dam was located downstream from where the current dam exists. It was used to provide water to the adjacent mill. This has been removed, however, the original dam embankments where the water wheel would have been remain intact. The current dam sits approximately 100 feet upstream from the historic location and is used to control water levels on Mill Pond, which is used as a MN DNR rearing pond and water levels are adjusted seasonally.

Water quality was monitored for a three-year period from 2007-2009 where total phosphorus levels where 20ppm and water clarity was 7.5 ft. The nutrient levels were found to be very similar to Lake Mellissa, which drains through Mill Pond. Due to its connection to Lake Melissa, the lake is also infested with Zebra Mussels and Flowering Rush.

Land cover in the 340 acres drainage area consist of 136 acres of forest (40%), 80acres of grassland (24%), 57 acres of cultivated crops (17%), 32 acres of wetlands (9%), and 34 acres of developed land (10%).

Implementation

Planned/Potential Projects:

Capital Improvement Projects:

Projects & Programs

Ongoing Programs:

Past Studies