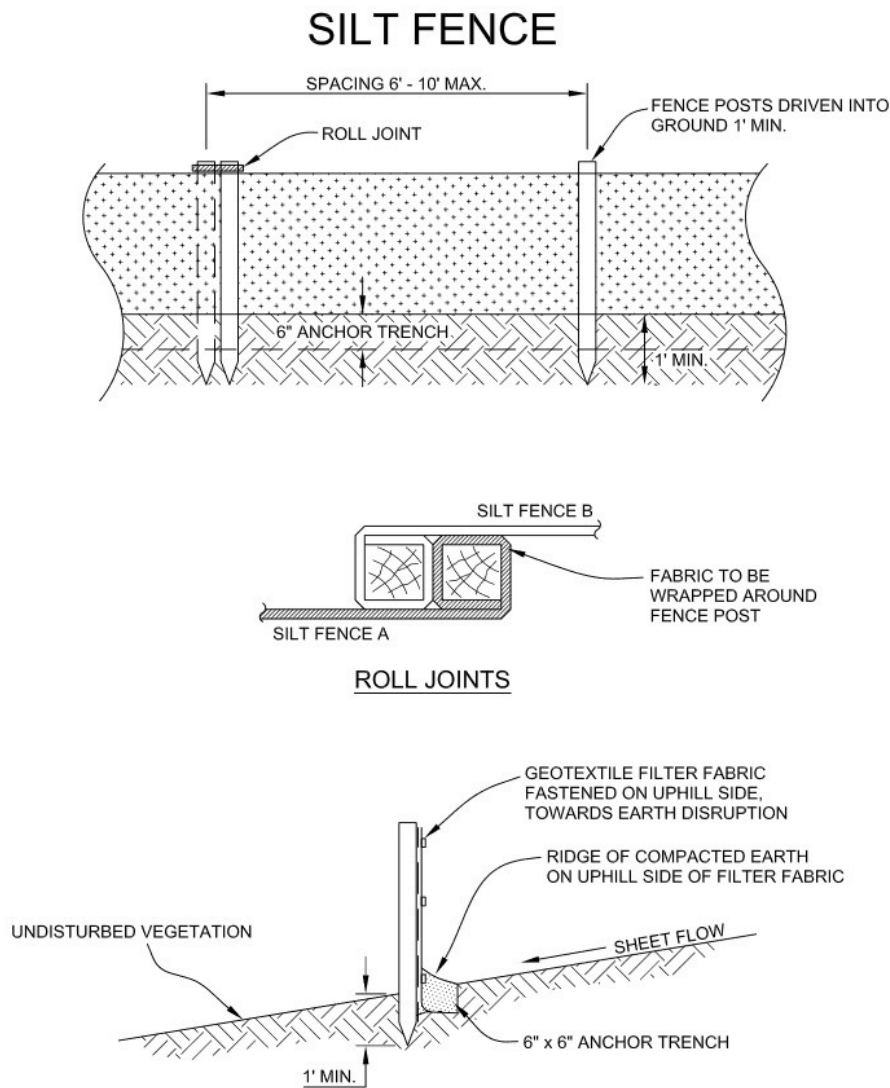


Proper Silt Fence Installation Guidelines

(material are available at most home improvement stores)

- Dig trench 6 inches deep and 6 inches wide downhill from disturbed area
- Lay silt fence in the trench, be sure to create a L or U shape with the fence in the trench
- Backfill the trench with the removed soil and compact
- Drive posts (metal or sturdy wood) at least 12 inches into soil downhill from the fence with a minimum 8 foot spacing
- While pull the fence tight upward, fasten the fence to the posts using metal fasteners or zip ties
- Inspect the fence for damage weekly and after storm event larger than 1-inch.



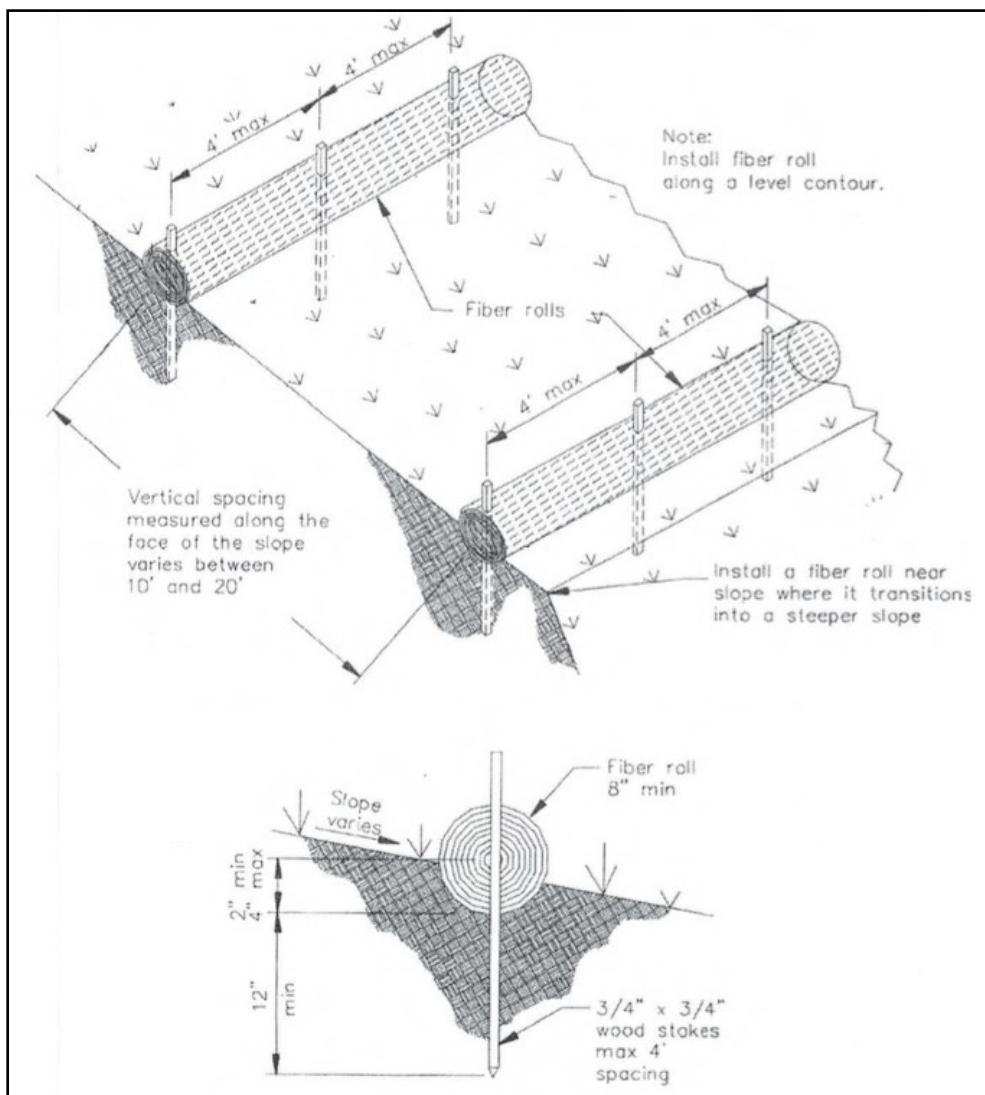
Note:

- You should not be able to easily lift of the silt fence out of the trench or off the ground.
- If the fence flaps or blows in the wind, it is not pulled tightly enough.
- To combine two fences, roll end of fence around post and join together

Proper Straw Wattle Installation Guidelines

(material are available at most home improvement stores)

- Place stray wattle along a level contour downhill from the disturbed area and at 10-20 feet intervals on disturbed slopes
- Lay the wattle in a 2-4 inch trench along each contour
- Drive 3/4" wood stakes a manimum of 4' apart at least 12" deep
- Inspect weekly and after storm event >1" for damage and remove sediment accumulation



Note:

- If the wattle is not dug into the soil it will not stop sediment flow underneath
- To join wattles, overlap at least 4 feet and stake each wattle