

Did You Know...

9 Water Facts:



80% OF THE EARTH'S SURFACE IS WATER

ONLY 1% IS USABLE FOR HUMANS

97% OF THE EARTH'S WATER IS SALTY AND UNDRINKABLE

WATER FREEZES AT 32° BOILS AT 212°

ANOTHER 2% IS LOCKED IN GLACIERS

A PERSON CAN LIVE FOR A MONTH WITHOUT FOOD BUT ONLY A WEEK WITHOUT WATER

66% OF YOUR BODY IS WATER

75% OF YOUR BRAIN & MUSCLES ARE WATER

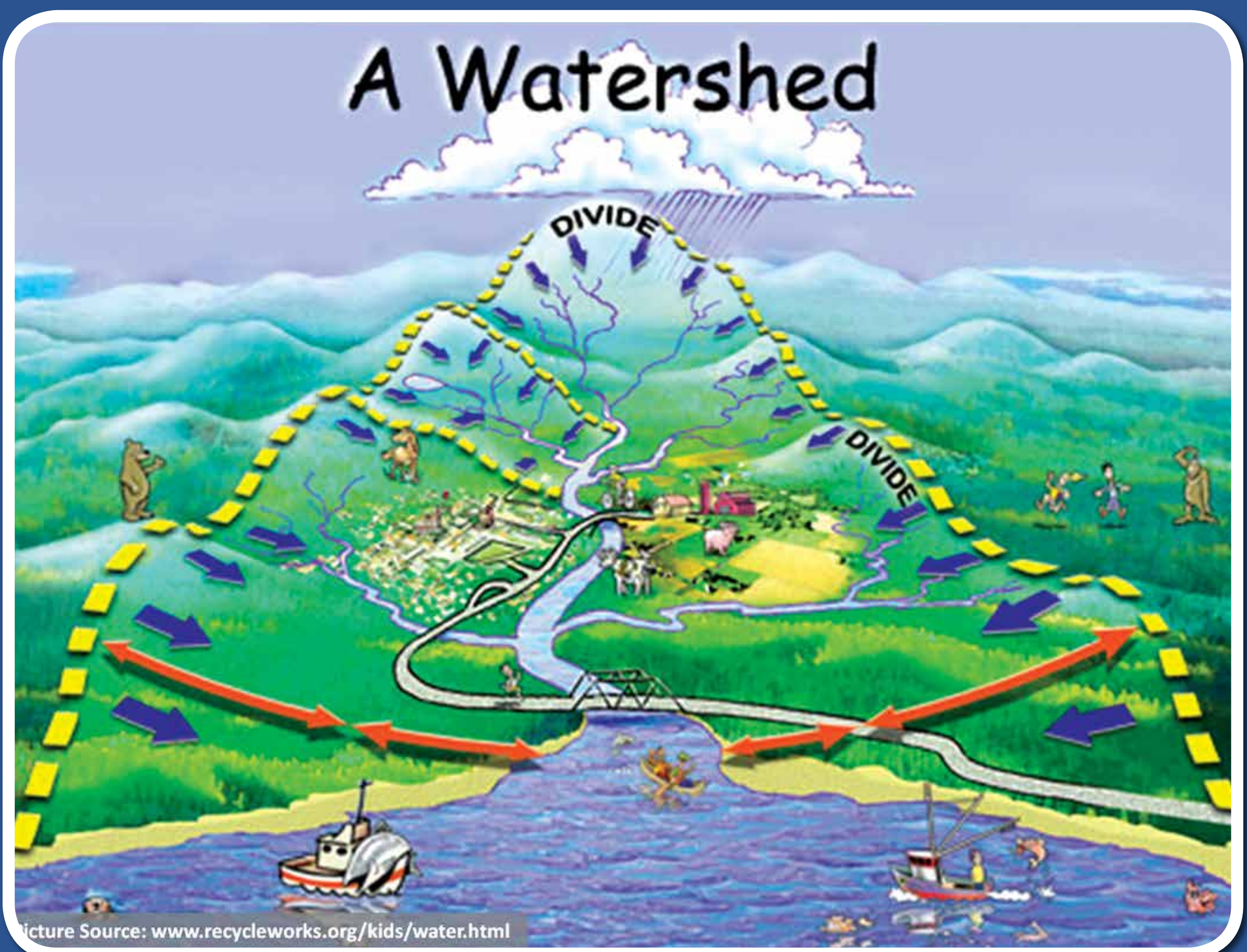
THE AVERAGE HOUSEHOLD USES 100,000 GALLONS OF WATER A YEAR

What is a Watershed?

AN AREA OF LAND THAT DRAINS TO A COMMON BODY OF WATER SUCH AS A LAKE OR AN OCEAN

WATERSHEDS CAN VARY IN SHAPES AND SIZE

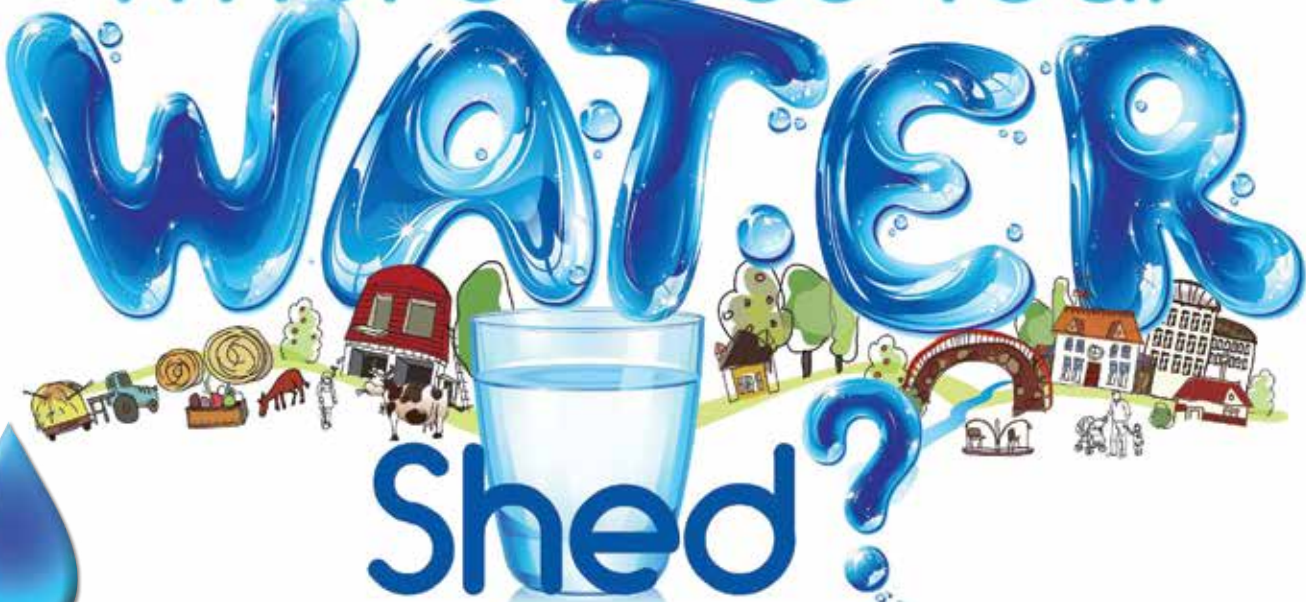
A WATERSHED IS USUALLY A MIX UP OF UPLANDS, WETLANDS, STREAMS, RIVERS AND LAKES



What is a Watershed's Duty?

TO PROTECT THE WATER QUALITY OF OUR LAKES AND RIVERS WITHIN THE WATERSHED DISTRICT

Where Does Your



HOW DO WE DO THIS?

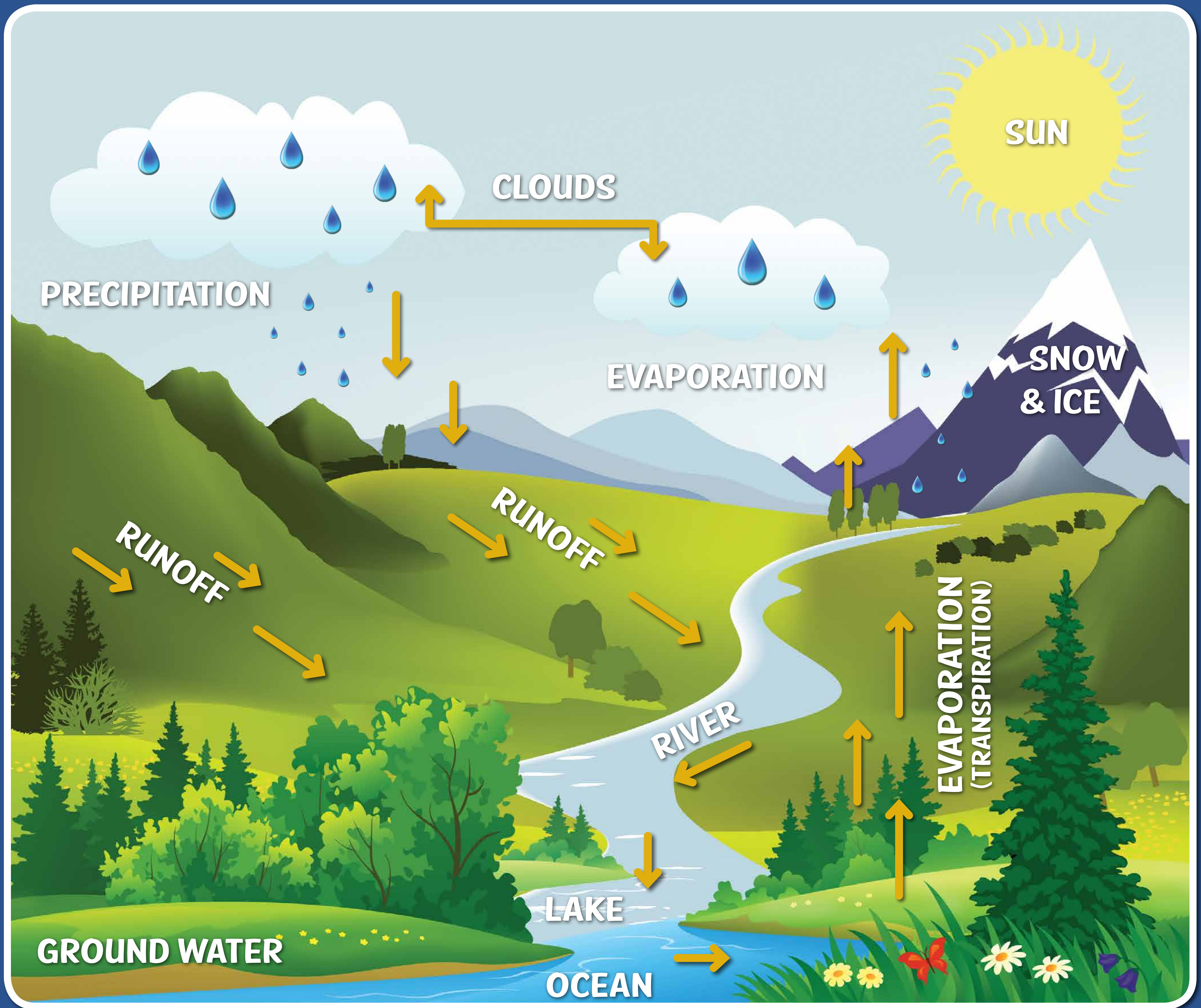
LAKE & STREAM MONITORING

WATER EDUCATION

PERMITTING

WORK WITH OTHER FEDERAL, STATE AND LOCAL UNITS OF GOVERNMENT TO ENSURE WATER QUALITY

The Water Cycle



CLOUDS
ARE
MADE OF
WATER VAPOR



GROUND
WATER
SEEPS BACK
TO THE
SURFACE TO FLOW OUT



WATER VAPOR
EVAPORATES
(TRANSPIRES)
INTO THE AIR
FROM **PLANTS**
AND **TREES**



WHEN IT'S
COLD
RAIN TURNS
TO **SNOW**



WATER
FLOWS
DOWN
RIVERS
TO THE **OCEAN**



THE SAME
WATER
GOES AROUND AND
AROUND THE
EARTH IN THE
WATER **CYCLE**



WATER
FREEZES INTO
ICE
AND TURNS INTO
SNOW ON MOUNTAINS



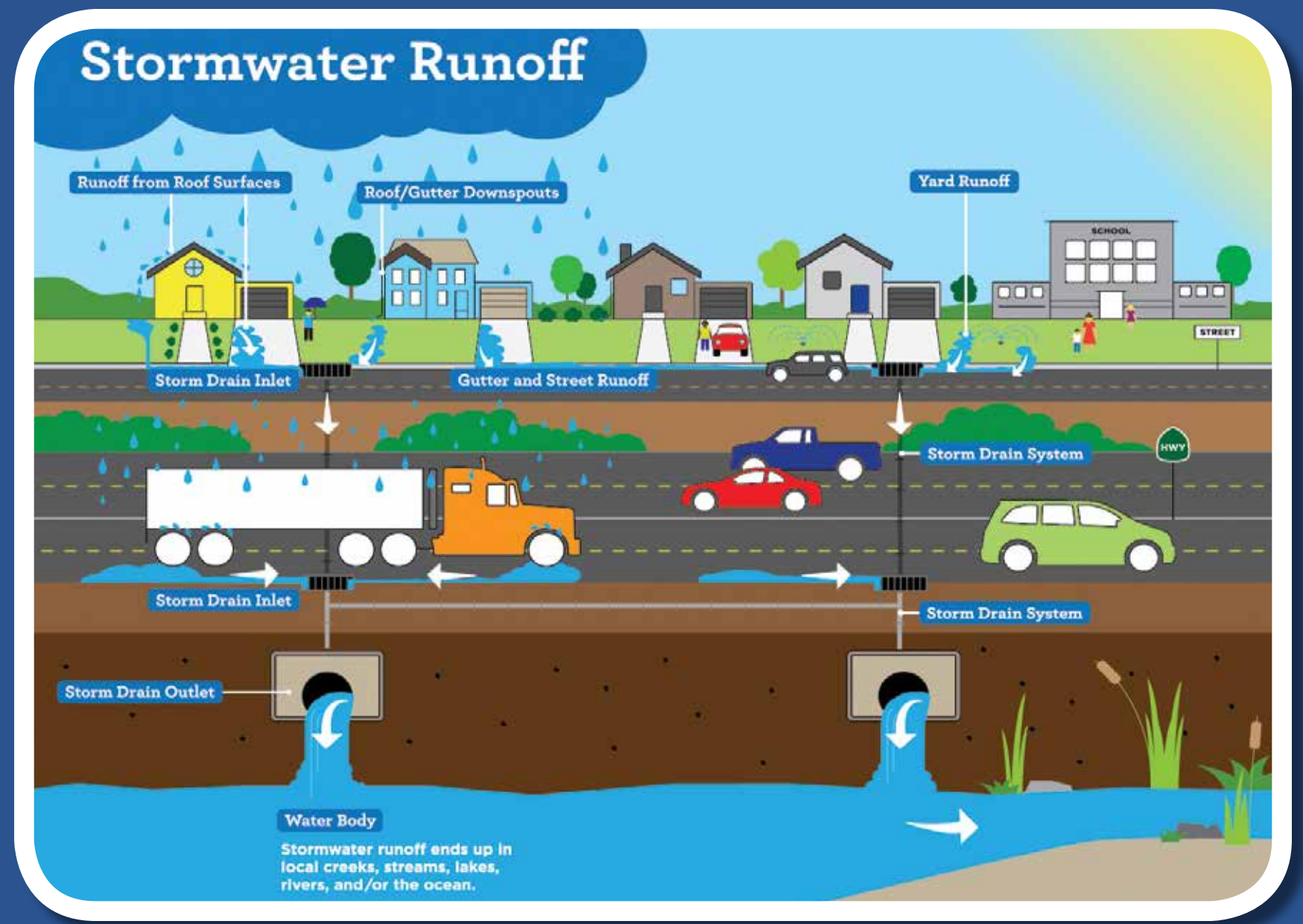
THE
WARMTH
OF THE
SUN
MAKES WATER EVAPORATE



LONG AGO...
DINOSAURS
MAY HAVE
DRANK THE SAME
WATER WE
DRINK TODAY!

PELICAN RIVER
watershed district

Only Rain Down the Drain!



STORM DRAINS ARE NOT FILTERS!



STORM SEWERS ARE DESIGNED TO PREVENT FLOODING

BUT ALSO PROVIDE DIRECT ROUTES FOR POLLUTANTS TO LAKES, RIVERS AND STREAMS



CONTROLLING POLLUTANTS IN STORM WATER RUNOFF, CAN CONTROL THE AMOUNT OF POLLUTION ENTERING OUR LAKES AND STREAMS

What Makes the Water Green?



PHOSPHOROUS COMES FROM MANY SOURCES, AND IT IS THE PRIMARY CAUSE OF WATER QUALITY PROBLEMS IN OUR LAKES AND STREAMS.

LEAVES

LAWN CLIPPINGS

PET WASTE

SOIL

How Can you Protect Water Quality?



USE YOUR RUNOFF: DIRECT DOWNSPOUTS ONTO YOUR LAWN OR GARDEN

GRASS - DON'T BLOW IT! LEAVE IT ON YOUR LAWN

PLANT A RAIN GARDEN: CAPTURE AND ALLOW WATER TO INFILTRATE INTO THE GROUND

SCOOP THE POOP: PICK UP PET WASTE SO IT DOESN'T WASH TO THE LAKES

REPLACE TURF WITH NATIVES: SWAP OUT SOME OF YOUR HIGH MAINTENANCE LAWN FOR LOW MAINTENANCE NATIVE GRASSES AND FLOWERS

FERTILIZE SMART: BE SURE IT IS PHOSPHOROUS FREE AND SWEEP UP SPILLS FROM HARD SURFACES