




# AIS Treatment 2024

-  CLP\_2024
-  Depth contours
-  Lakes

## Curly-leaf Pondweed Acres to be Treated

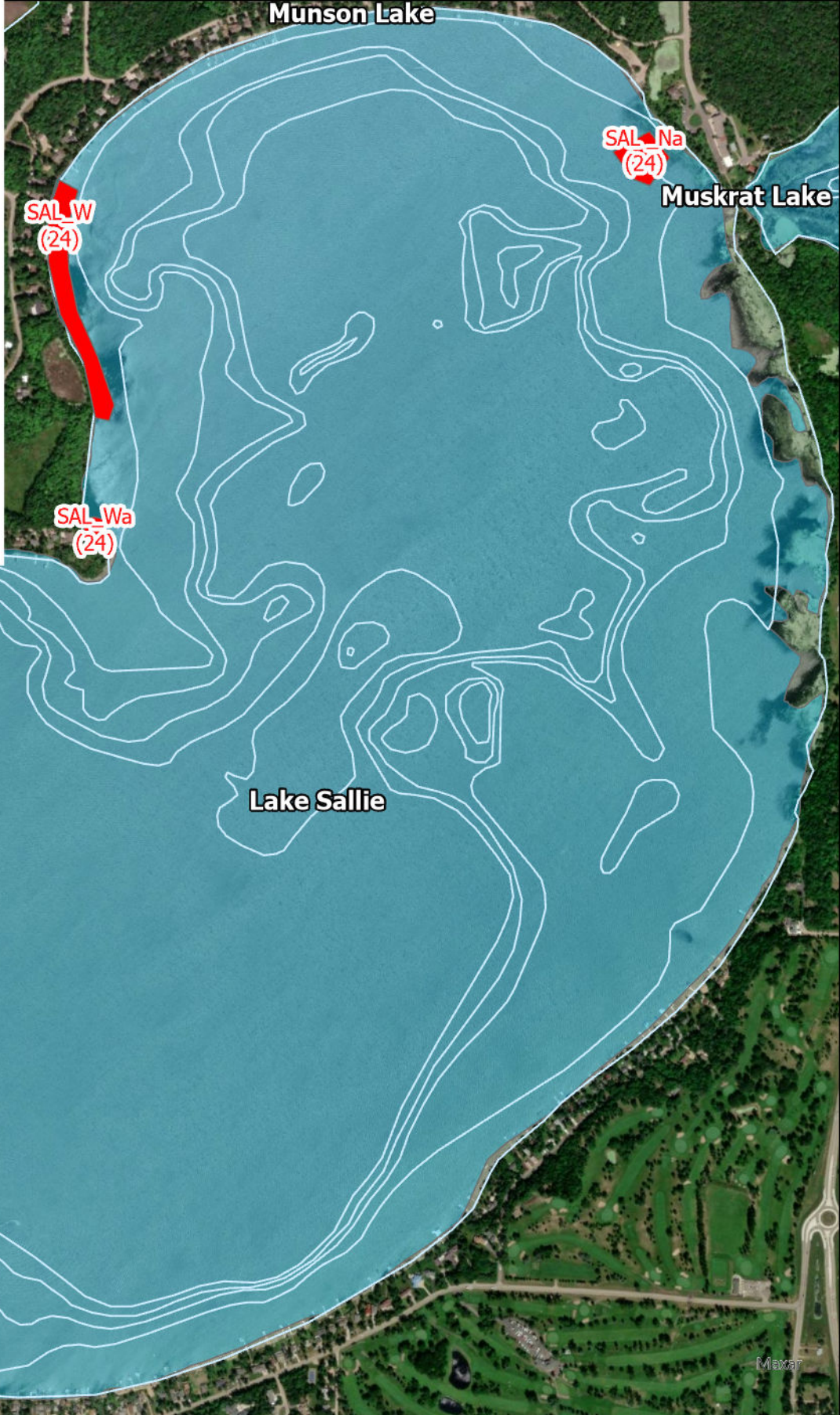
**SAL\_Na (24): 1.99 Acres**

**SAL\_W (24): 5.30 Acres**

**SAL\_Wa (24): 0.61 Acres**

**SAL\_S (24): 16.70 Acres**

**Total Acres: 24.60 Acres**



## Lake Sallie Curly-leaf Pondweed (2024 Proposed)

*Spatial Reference*  
Name: NAD 1983 UTM Zone 15N  
PCS: NAD 1983 UTM Zone 15N  
GCS: GCS North American 1983  
Datum: North American 1983

